



Please ask for: Louise Kellam
Direct Dial: (01892) 554 144
E-mail: Louise.kellam@tunbridgewells.gov.uk
Reference:
Date: 08 April 2022

Dear All

JOINT TRANSPORTATION BOARD - MONDAY 11 APRIL 2022

I am now able to enclose, for consideration at the next meeting of the Joint Transportation Board, the following report that was unavailable when the agenda was printed.

Agenda No Item

10 **Near Miss Reporting Tool Summary** (Pages 3 - 8)

Report of Terry Hughes, Community Safety Manager

Kind regards,

Louise Kellam
Democratic Services Officer

Encs

This page is intentionally left blank

Near Miss Reporting Tool Summary

For Joint Transportation Board on Monday 11 April 2022

Author: Terry Hughes, Community Safety Manager

Status: For Information Only

Recommendation: For information to be passed on to Parishes (for Highway Improvement Plans) as well as Community Speedwatch groups. Also to support the Community Safety Unit in finding future opportunities for utilising the Tool and information produced.

In Summary

196 reports for Financial Year 2021/22

- 175 in daylight
- 170 in dry conditions
- 183 no damage reported
- Damage reports include six property boundaries and three trees

PARISH AND WARD BREAKDOWN

Parish	#
Tunbridge Wells (NCP)	96
Speldhurst CP	6
Southborough CP	13
Rusthall CP	30
Pembury CP	5
Paddock Wood CP	6
Lamberhurst CP	3
Horsmonden CP	1
Hawkhurst CP	8
Goudhurst CP	1
Cranbrook & Sissinghurst CP	6
Capel CP	5
Brenchley and Matfield CP	4
Benenden CP	8
Out of borough	4

Ward	#
Benenden and Cranbrook	13
Brenchley and Horsmonden	5
Broadwater	6
Capel	5
Culverden	13
Frittenden and Sissinghurst	1
Goudhurst and Lamberhurst	4
Hawkhurst and Sandhurst	8
Paddock Wood East	4
Paddock Wood West	2
Pantiles and St. Mark's	12
Park	39
Pembury	5
Rusthall	30
Sherwood	7
Southborough and High Brooms	8
Southborough North	5
Speldhurst and Bidborough	6
St. James'	9
St. John's	10

FURTHER GRANULARITY

RUSTHALL (30)

Most common locations

Lower Green Road (15) including its junctions with Ashley Park (4) and Rusthall Road (7); Ashley Gardens (7) including its junction with Erskine Park Road (4)

Most common issues reported

- Speeding
- Cars having to brake quickly
- Vehicles exiting junctions without due care

PARK (39)

Most common locations

Cornford Lane (12); Bayhall Road (4); Carr's Corner (5, on or around that location); Camden Road (5)

Most common issues reported

- Vehicles ignoring a pedestrian crossing or no pedestrian crossing
- Cars driving too fast / narrow road
- Large vehicles driving too fast / narrow road
- Poorly parked cars

ST JAMES (9)

Most common location

St James' Road (4)

Most common issues reported

- Poor parking
- Speeding
- Vehicles driving too close to or on the pavement

BENENDEN AND CRANBROOK (13)

Most common locations

The Street / Iden Green Rd Jct (5); The Hill / Stone St Jct (3)

Most common issues reported

- Cars approaching the crossroads too fast or simply driving through without stopping
- Blind junction/bend

PANTILES AND ST. MARK'S (12)

Most common locations

Bayham Rd (8) including Forest Rd / Bayham Rd Jct (4)

Most common issues reported

- Blind junction/bend
- Vehicles ignoring a pedestrian crossing

CULVERDEN (13)

Most common location

St John's Road near John Street (4) (not in close enough proximity to consider it a cluster)

Most common issues reported

- Vehicles not respecting cycle lane
- Driving on pavement

ST JOHN'S (10)

Most common locations

Powder Mill Lane (3) including its junction with St John's Road (2); Silverdale Road (3); Upper Grosvenor Road (4)

Most common issues reported

- Undue care while school children are out and about
- Pavement or inconsiderate parking

REPEAT REPORTERS

Rusthall (27), Cranbrook (5), Paddock Wood (5)

INCIDENTS HAVE BEEN (LOOSELY) CATEGORISED AS

Issue Type	#
Dangerous driving	49
Undue care - driver	23
Obstruction by parking	16
Dangerous junction	13
Unknown/unclear	12
Driving on Pavement	12
Narrow road	8
Inattentive child	4
Obstruction by signage	4

Issue Type	#
eScooter	3
Blind bend	2
Cyclist danger	2
Item on pavement	2

And one each of the following:

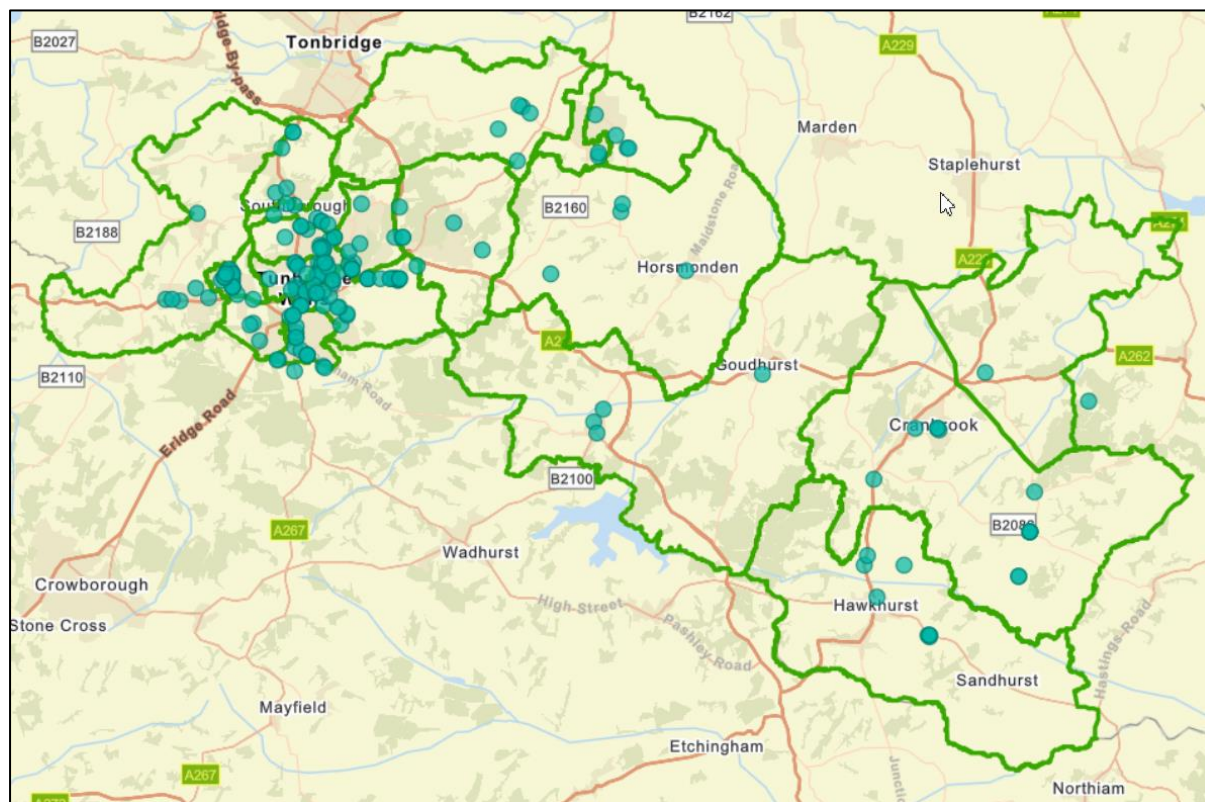
Poor paving, Bend in the road, Salt bin damaged, Blind corner, Blind junction, Cycle path flooding, Poor road surface, Item in road, Poor road marking, Obstruction by parking - pedestrians, Pavement - hazard, Obstruction by vegetation, Inappropriate speed limit, Obstruction by unknown, Zebra danger, Lights favour vehicles, Dangerous bend.

Disclaimer!

Categorising reports is quite challenging and relies heavily on the content provided in the report made by the resident. Further work may need to be done here. For instance, an argument could be made that most if not all instances of “dangerous driving” could be classed also as “driving with undue care”, and vice versa. I have tried to classify them in a way that provides meaningful context. It’s not scientific.

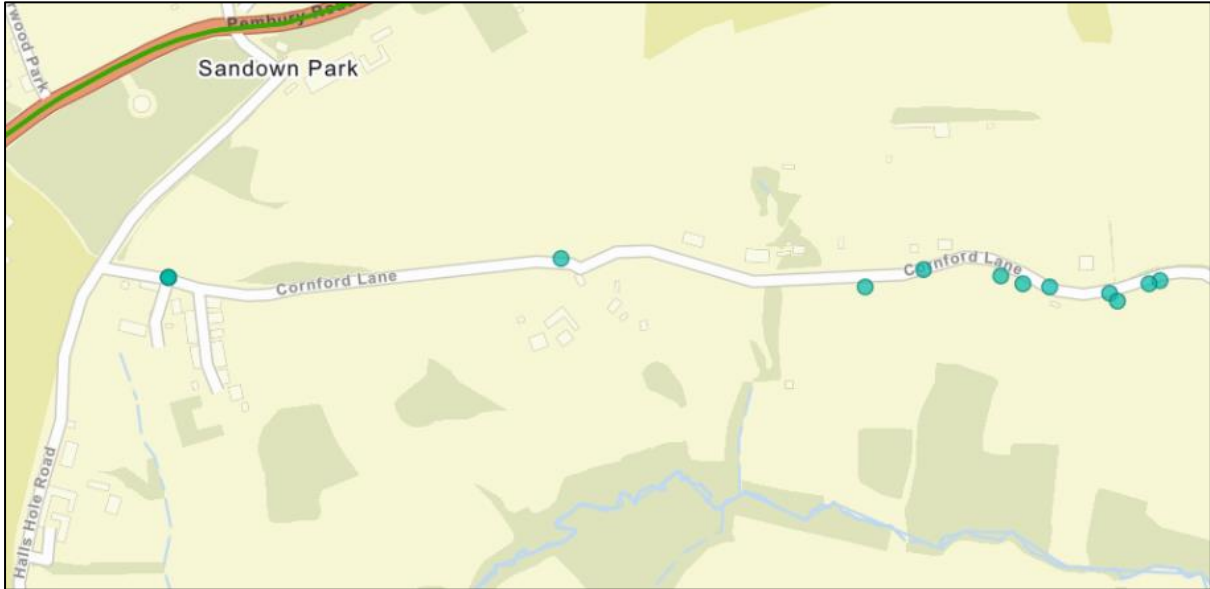
MAPS

OVERVIEW

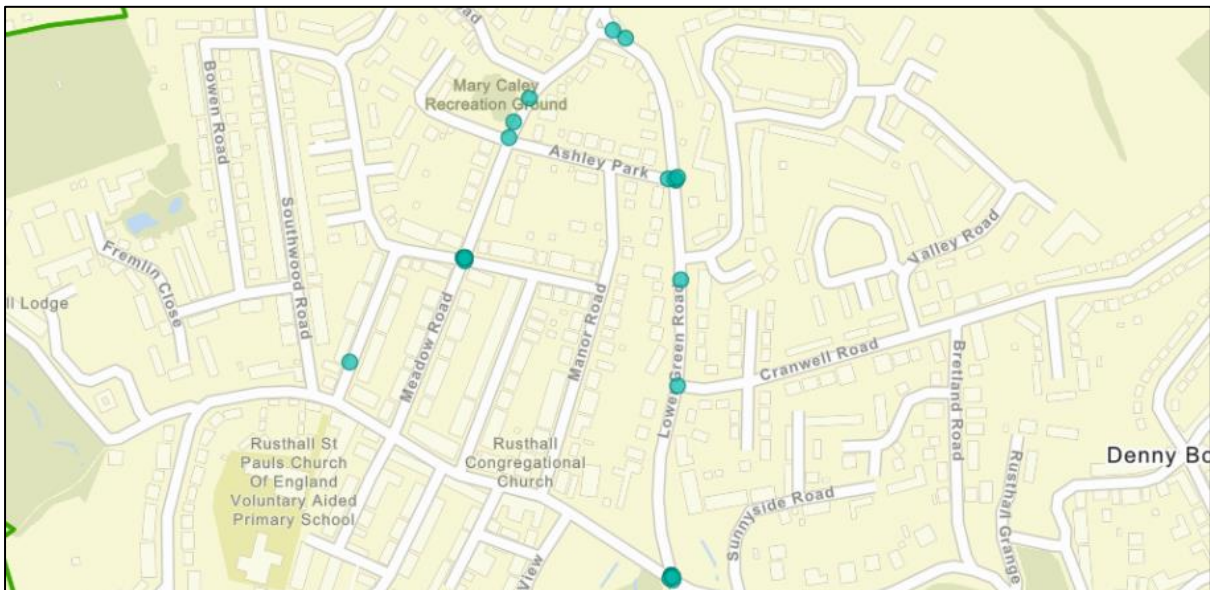


SELECTED LOCATIONS

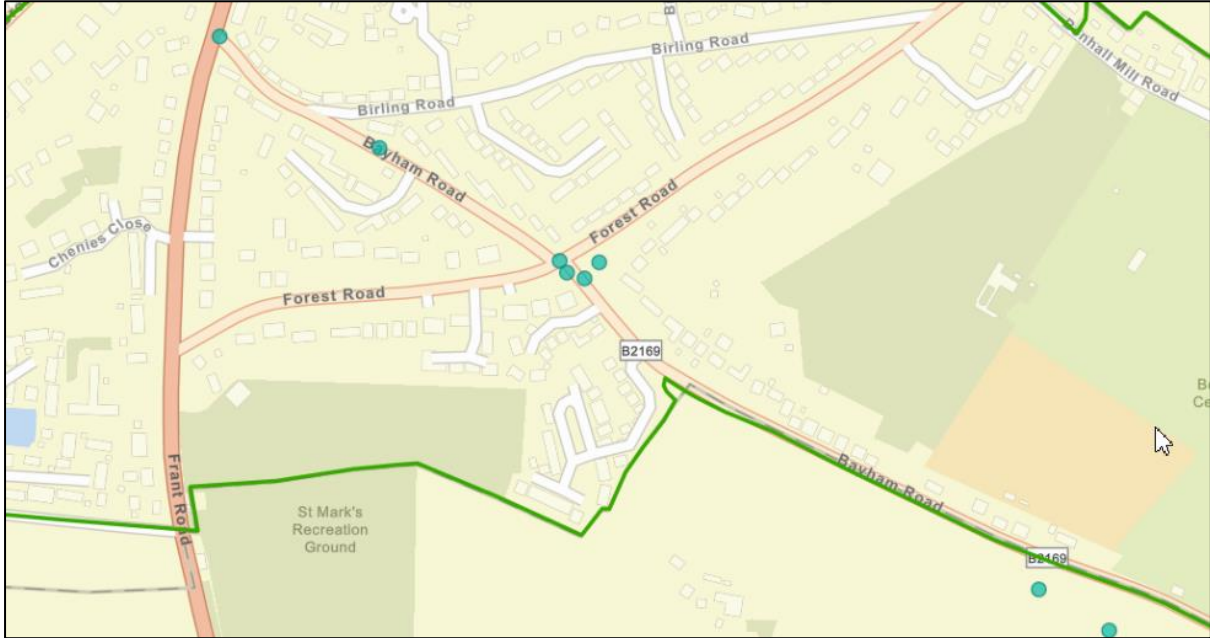
CORNFORD LANE



RUSTHALL



BAYHAM ROAD



CARR'S CORNER

