

APPLICATION PROPOSAL

Ref No 22/01866/FULL

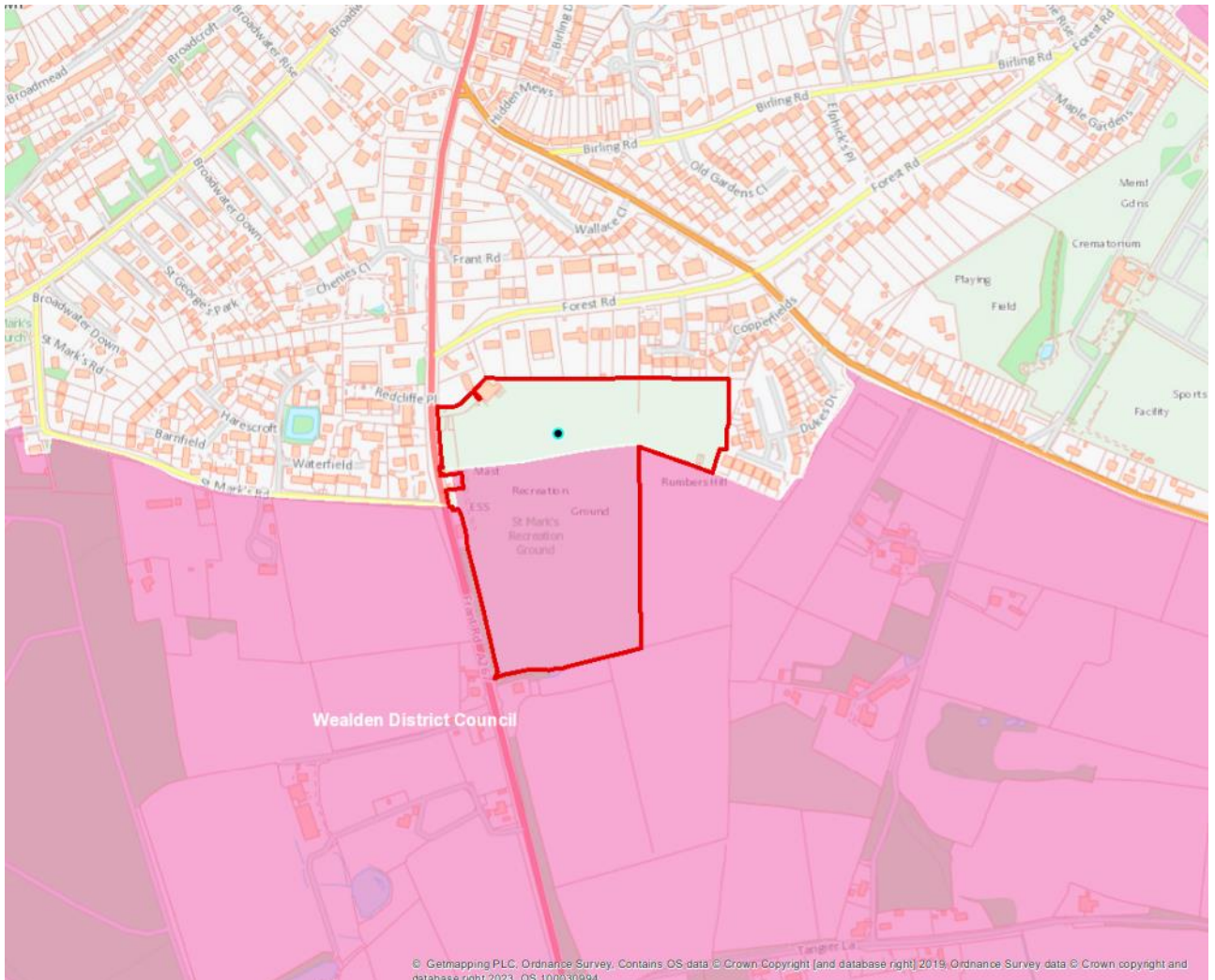
Construction of a 3G Artificial Grass Pitch; erection of a storage building; construction of a cricket pavilion; provision of 76 additional car parking spaces; change of use of agricultural land to a cricket pitch and outfield under recreational use (Use Class F.2(c); and retrospective erection of a decking area and pergola.

ADDRESS: St Marks Recreation Ground, Frant Road, Royal Tunbridge Wells, Kent, TN2 5LS

Condition Summary

- (1) Implementation Condition
- (2) Approved Plans
- (3) External Materials
- (4) Construction Environmental Management Plan
- (5) Tree Protection
- (6) Tree Protection
- (7) Landscaping
- (8) Landscape Implementation
- (9) Landscape and Ecological Management Plan
- (10) Visibility Splays
- (11) Parking and Turning Provision
- (12) Cycling and EV Charging Provisions
- (13) Coach Access and Parking
- (14) Floodlighting
- (15) External Lighting
- (16) Floodlight Shut-Off Controls
- (17) Verification of Installation of Lighting Scheme
- (18) Noise Management Plan
- (19) Replacement and New Cricket Facilities
- (20) All-Weather/3G Pitch Testing
- (21) Community Use Agreement
- (22) Facilities Management and Maintenance Scheme
- (23) Hours of Use (All-Weather/3G Pitch)
- (24) Sustainable Surface Water Drainage Scheme
- (25) Verification Report
- (26) Importing and Exporting of Soils
- (27) Earthworks and Levels
- (28) Removal of PD for Extensions and Change of Use
- (29) Watching Brief
- (30) Reporting Unexpected Contamination
- (31) Parking Monitoring Plan
- (32) Screening

Site Location Plan (Postcode: TN2 5LS)



Block Plan

